

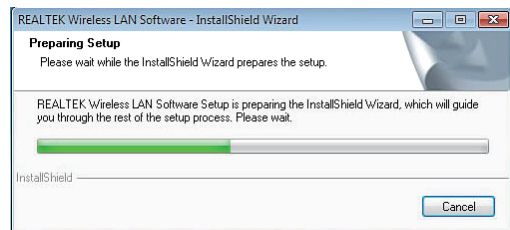
USB Wireless Adapter Quick Installation Guide

Note: This Manual based on Windows7

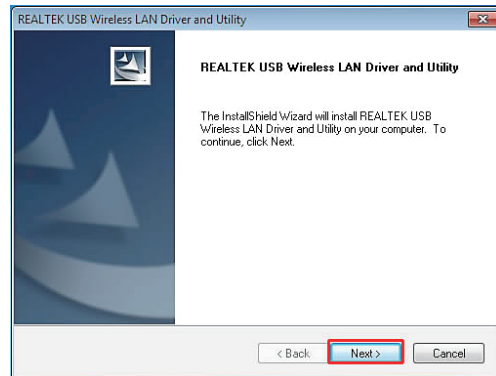
01. Once the wireless USB adapter be plugged into an USB port , put in the CD and find windows file “windows (xp,vista,win7,win8,win10)” andSetup.exe.



02. Double click Setup.exe file, Software begin to initialization,then click the “Next”.There shows the installation progress.

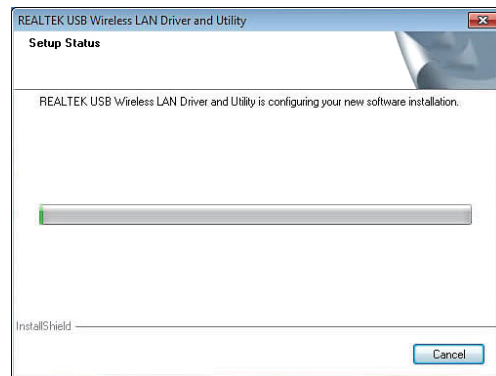


1

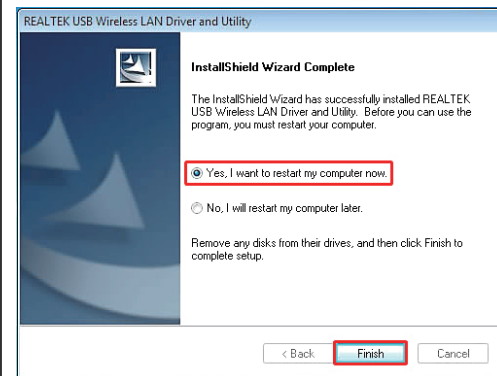


2

03. Do not interrupt installation, Click “finish” to finish the driver installation.The computer automatically restart.





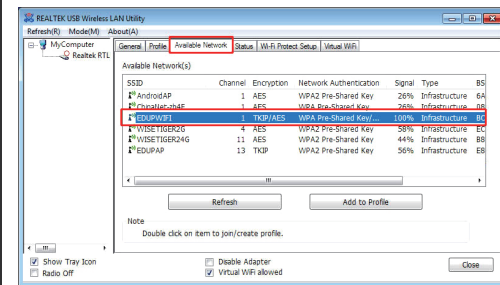
3



4

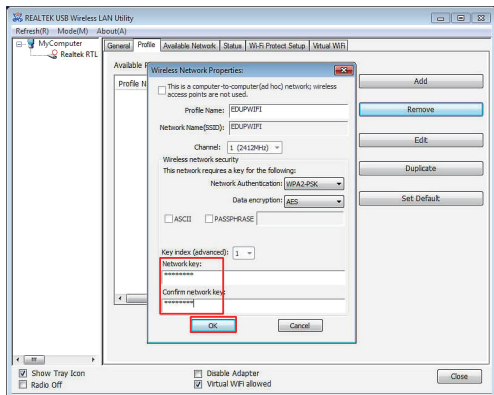
Wireless connection (two ways to realize Wireless connection 1 :

04. Click Icon  in the Windows system tray, which locates in the bottom-right corner of your computer screen or double click , and pops up a message and click“Available Network” Double-click the utility icon or right click the icon ,and the Wireless Network Connection window appears then double click the SSID you preferred.

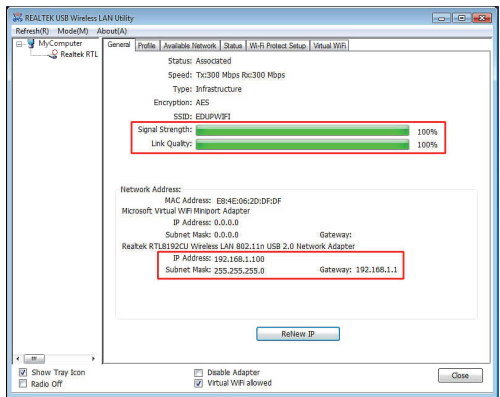


5

Type the encryption key that you wrote down earlier in both the Network key and Confirm network key boxes, and then click “ok”.

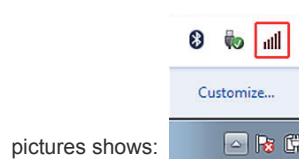


6




7

Note:if there is no icon , please find it in the on right bottom,it have been hide as following



pictures shows: Wireless Connection2.

05. Click Icon  which locates in the bottom-right corner of your computer screen,click the wireless network list and choose the SSID you preferred. and double click (Or click “Connect”).



8

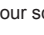

Type the encryption key and then click “ok”.

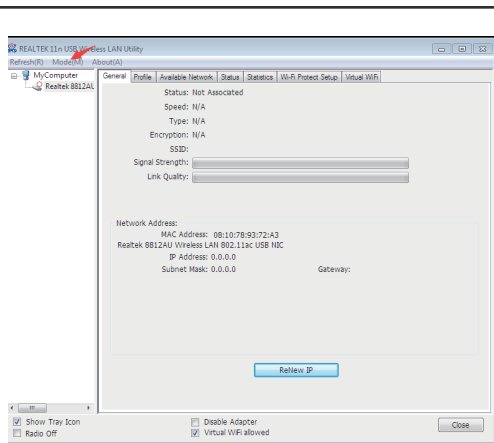


9

How to configure the AC1200 Dual Band Wireless USB Adapter?

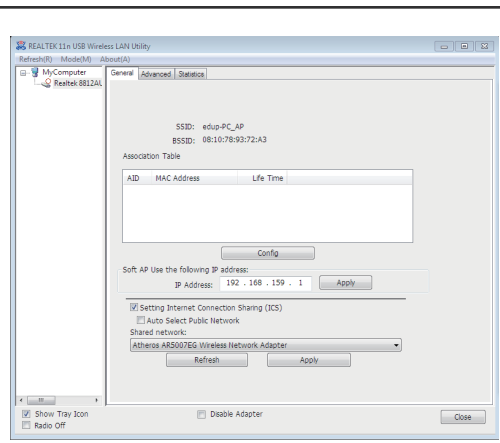
Once the installation of drive software is completed, you can configure AC1200 Dual Band Wireless USB Adapter to connect a wireless network.

The wireless configure utility will start automatically, and y ou'll also find a tray icon  in your Windows systems tray.Click the  and your screen will be as below. Click the “MODE(M)” and switch to “Access Point”. Select this option to use the Utility as an access point and to set up a wireless network as your own.



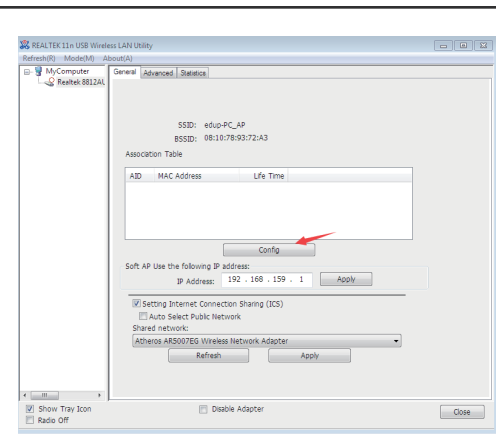
And your screen will be as below.

10

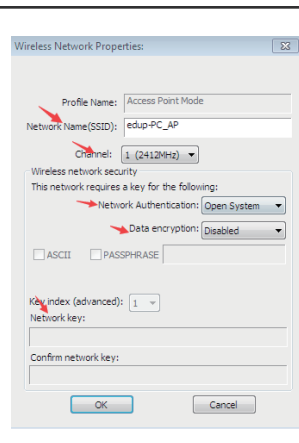


11

Click the “config” and you can set up the “Network Name” “Channel ” “Network Authentication Data encryption” and “Network key”. Then click “OK” and you can use the “Access Point” mode.



12



13

1.The channel > 13 is 5G wireless network and the channel ≤13 is 2.4G wire network.
2.The wifi adapter can create a 2.4G access point or a 5G access point if your computer connect to internet by Ethernet cable.